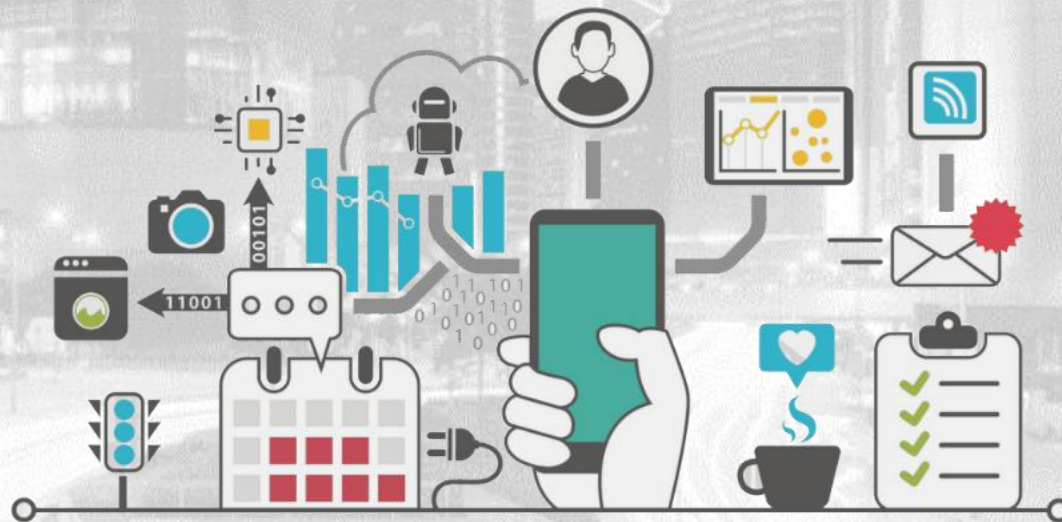




AIOT



SENSE CONNECT

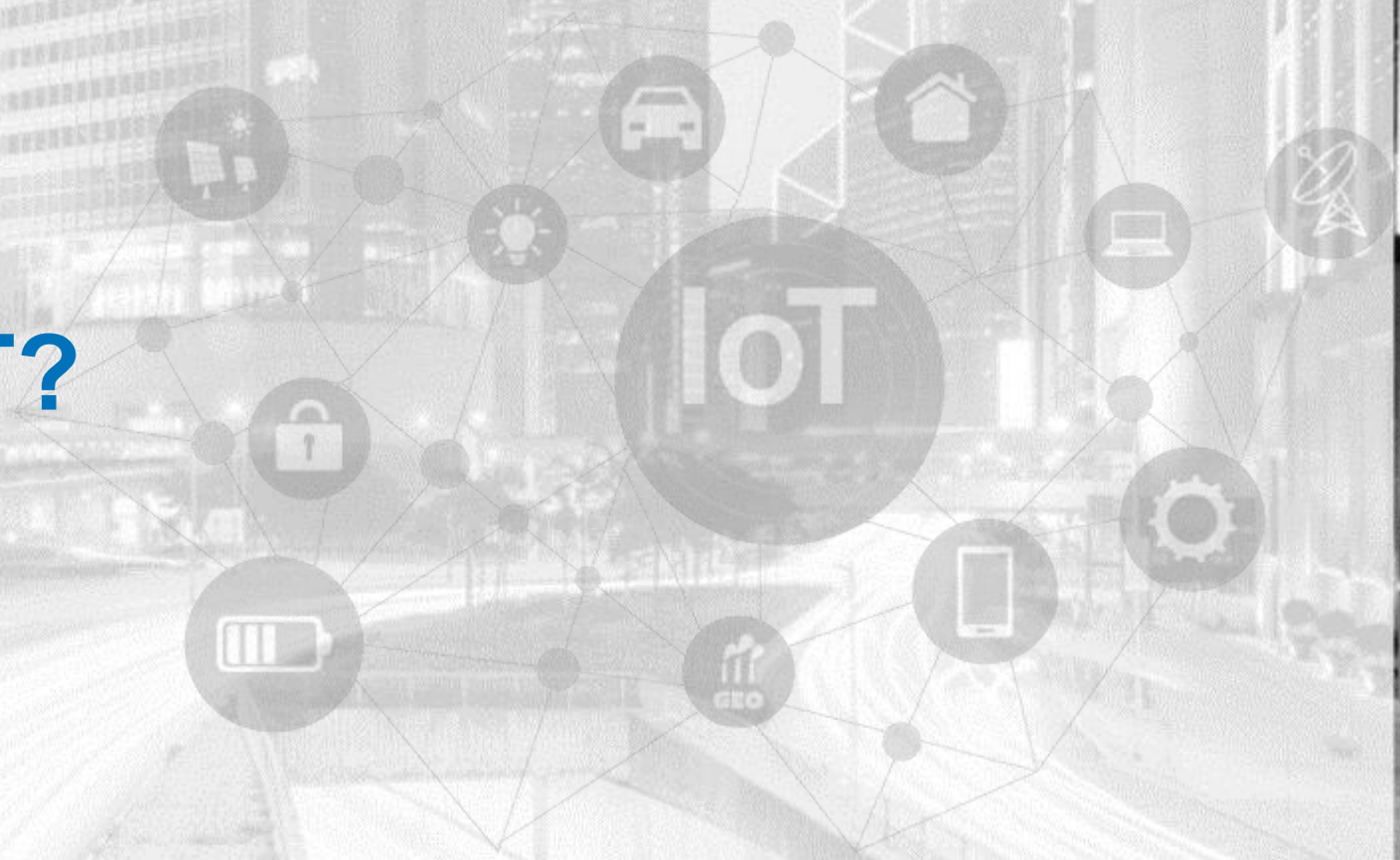
LEGAL DISCLAIMER FOR CONFIDENTIAL COMPANY PRESENTATIONS

This presentation is the property of Chinotech International Limited and its subsidiaries (the “**ChinoINT**”) and is strictly confidential. It contains information intended only for the person to whom it is transmitted.

With receipt of this information, recipient acknowledges and agrees that:

- (i) this document is not intended to be distributed, and if distributed inadvertently, will be returned to **ChinoINT** as soon as possible;
- (ii) the recipient will not copy, fax, reproduce, divulge, or distribute this confidential information, in whole or in part, without the express written consent of **ChinoINT**;
- (iii) all of the information herein will be treated as confidential material with no less care than that afforded to its own confidential material.

Who is ChinoINT?



Partners & Customers in Next Gen Smart Solution



suez

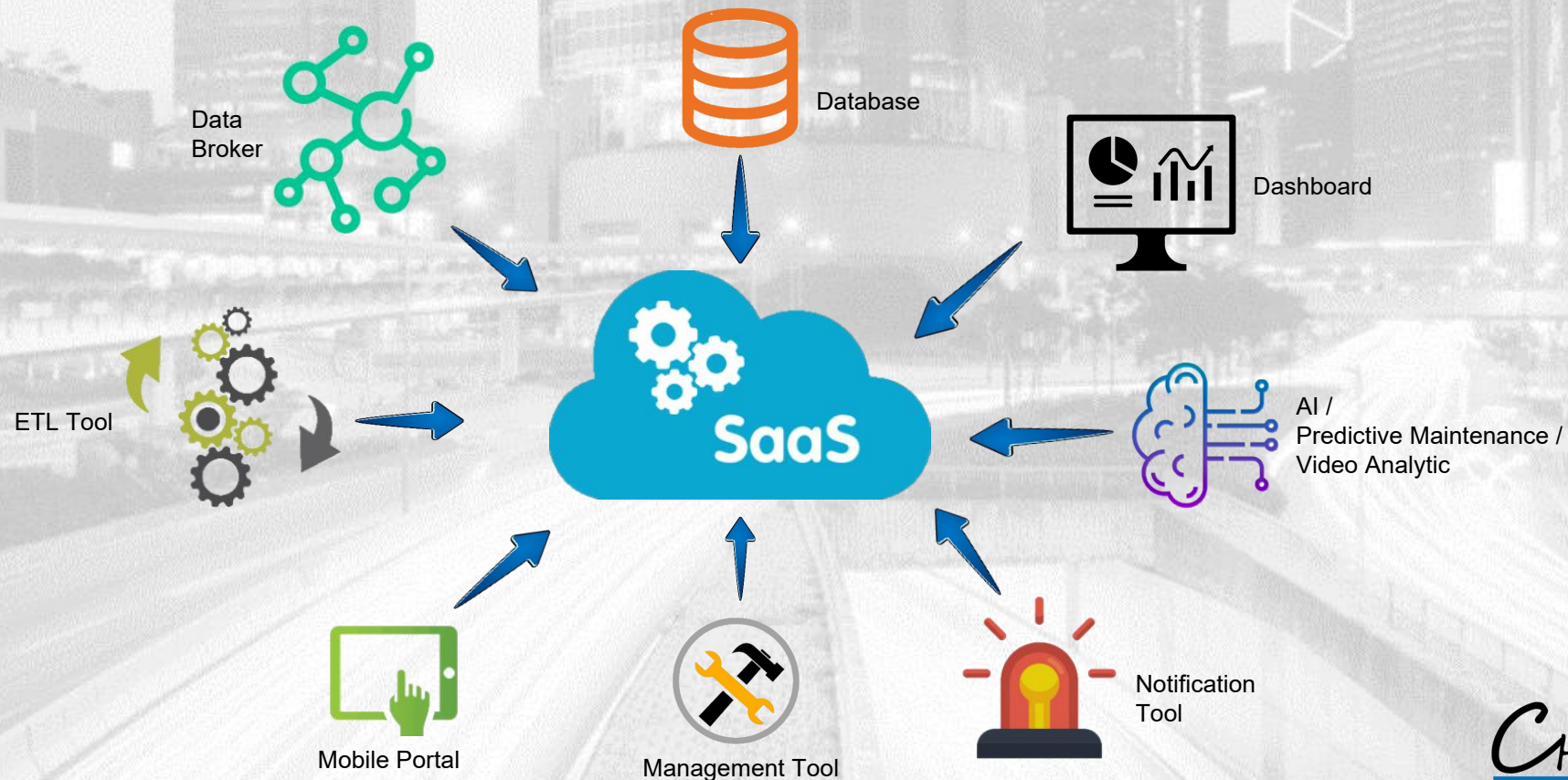
IBM

SIEMENS *ITChannel*

ChinoINT SaaS

ChinoINT creates the next generation SaaS and IOT platforms.

The SaaS is a complete platform including data broker, ETL tool, Database, dashboard, management tools, mobile portal and notification tools, etc. This fulfills all your IOT needs and generates extra values to our clients.



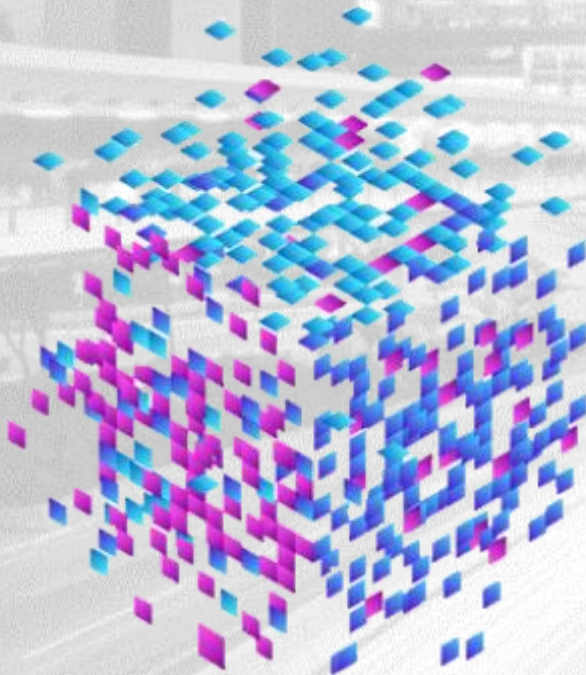
ChinoINT Big Data Analytic

ChinoINT is the Data Expert.

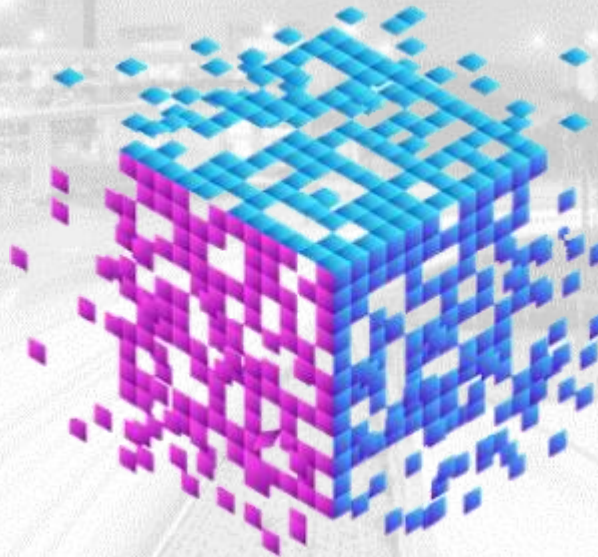
Not only expert in wireless sensor design, but also in data consolidation, storage, manipulation, analytic and data visualization.

Our experts help you to drill into the hidden meaning of data, and generate insight from the data.

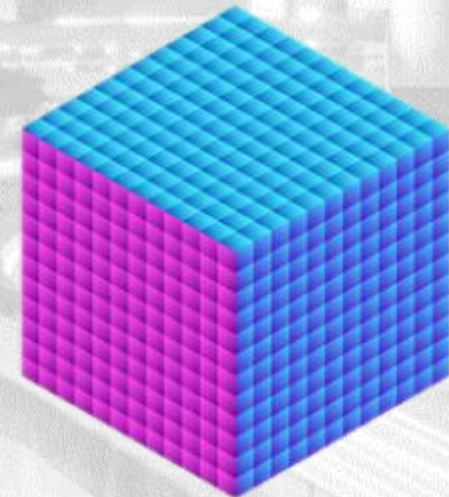
BIG DATA



Analytic



INSIGHT



Confined Space Management



Confined Space Monitoring System

Features:

- Count the number of **authorized** people getting into and out of the confined space
- Count the number of **unauthorized** people getting into and out of the confined space
- Safety Helmet enforcement
- Real time alert for unauthorized people
- Identify foul behavior, such as getting into the area through undefined path
- Prolonged stay alert in confined space

Benefits:

- Reduced site monitoring staff at each site
- Real Time alert system for Safety monitoring
- Remote monitoring at Control Room
- Dashboard for Management Review
- Attendance Record for different contractors
- Analytic data for work site safety and usage
- Easy to install sticky tag



Health Monitoring for personnel (LoRaWan based personnel health track)

Especially in confined spaces, a lot of places in the construction sites are with no GSM reception.
Thus, LoRaWan would be the best choice for construction sites.





Air Quality Sensors

Different housing for different needs



Shock-approval Certification	Ex d IIC T6 Gb
------------------------------	----------------

LoRaWan Manhole Monitoring



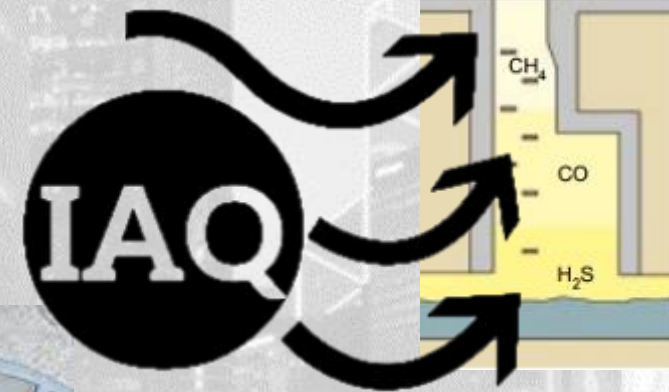
ChinoINT provides both indoor / outdoor edge computing LoRaWan gateway to simplify and ease the installation



Immersible water level monitoring



Simple & effective cover monitoring

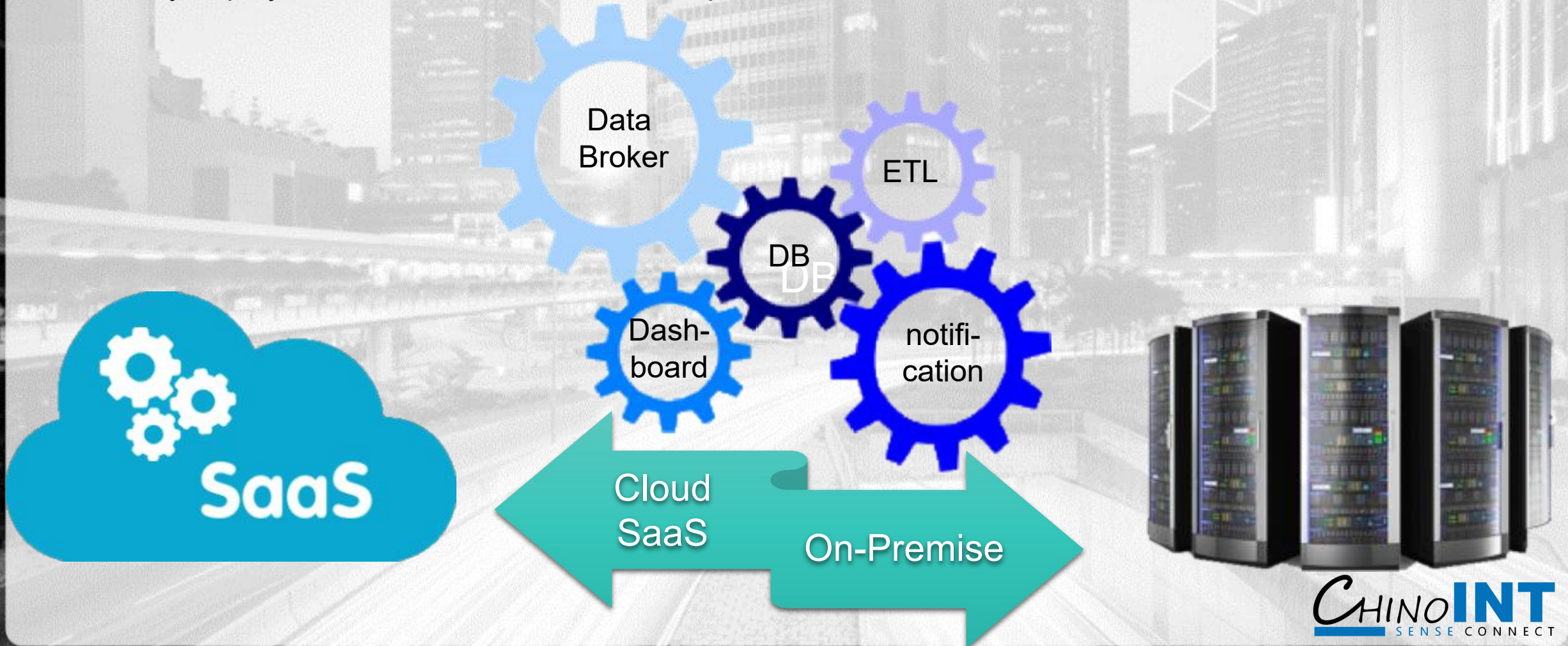


Air Quality monitoring

ChinoINT specializes in wireless customization to overcome signal transmission issue due to manhole structure

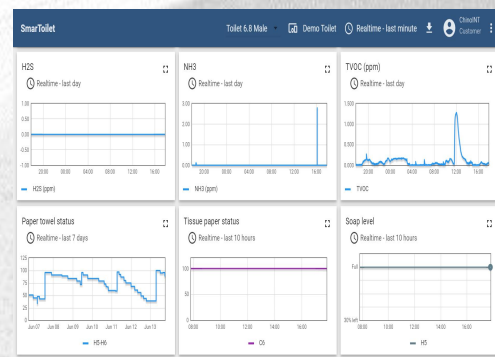
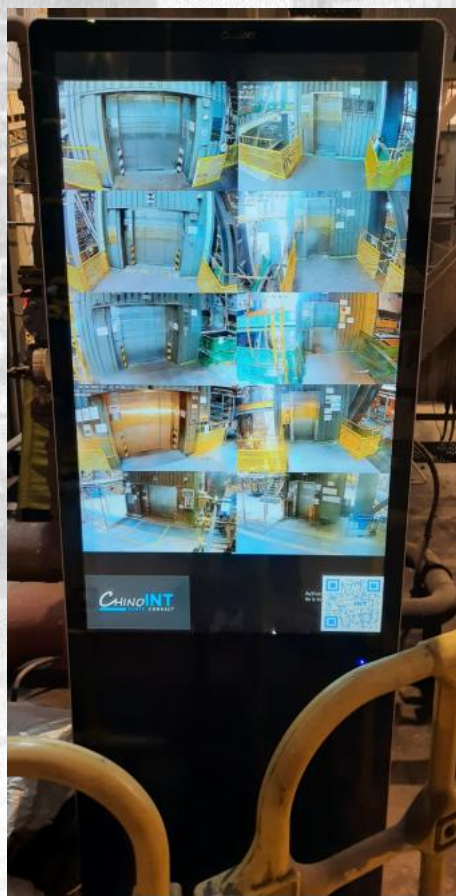
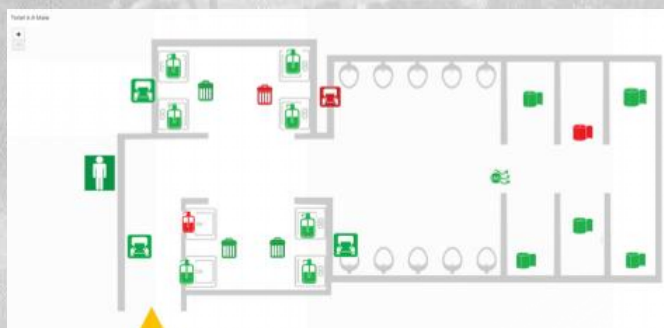
Centralized Management Platform

The Software Platform consists of Data Broker, ETL tool, Database, Dashboard and notification modules. For easy deployment, both Cloud SaaS and on-premise version is available.



Dashboard

Clean and clear dashboarding is one of the key element in an IoT system. The Smart Toilet platform provides easy to use dashboard, with multi-layer user account settings. GUI Maintenance Portal is provided with the platform. Both desktop and mobile version (Android and IOS) are available.



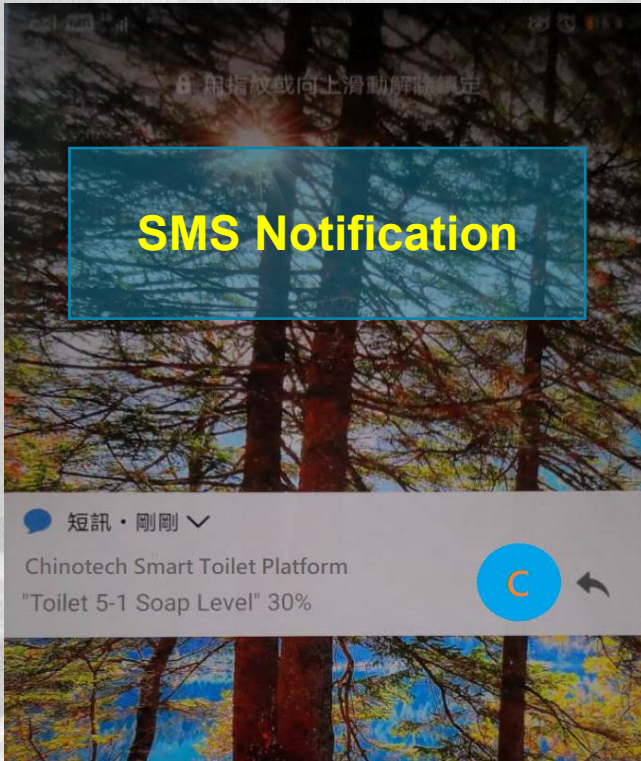
Notification

Notification is one of the crucial feature for Smart Toilet, in order to achieve on-demand cleaning and best resource utilization.

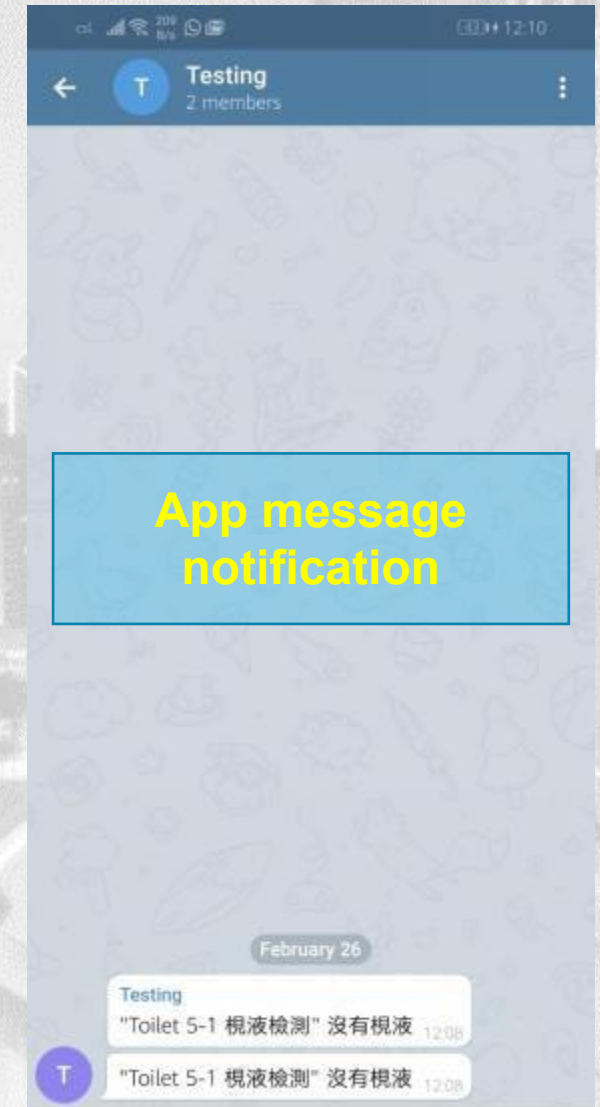
Notification can be done through app, notification bar alert, SMS and through e-mail.

App message notification can be configured as group alert, and individual alert.

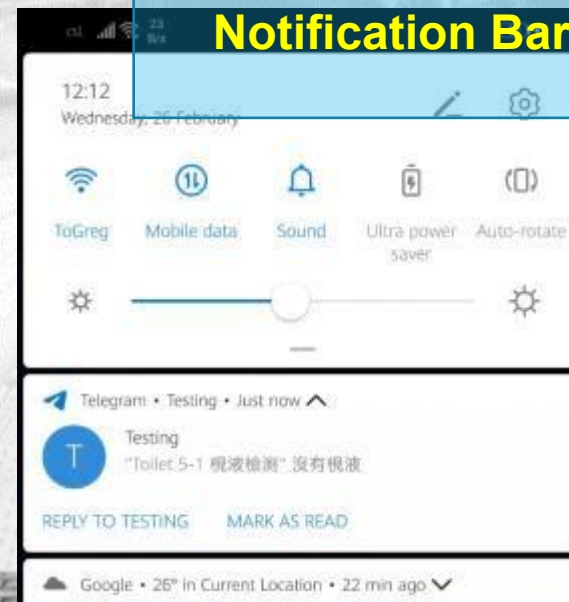
SMS Notification



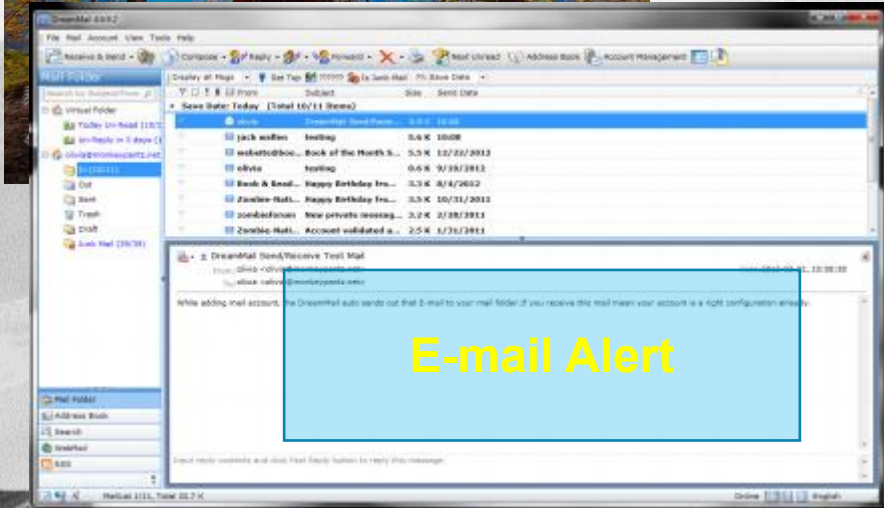
App message notification



Notification Bar



E-mail Alert



Smart Worksite Control Center



Solutions & References



Smart Solutions Done Smartly

Region	Name	End user	Year of Completion
Hong Kong	SSSS - Confined Space management	CLP - Black Point Power Plant	2020
Hong Kong	SSSS - Confined Space management	CLP - Castle Peak Power Plant	2019
Hong Kong	SSSS - Confined Space management	CLP - Black Point Power Plant	2021
Hong Kong	SSSS - Confined Space management	CLP - Castle Peak Power Plant	2021
Hong Kong	SSSS - Confined Space management	CLP - Black Point Power Plant	2022
Hong Kong	SSSS - Confined Space management	CLP - Castle Peak Power Plant	2022
Hong Kong	SSSS - Turbine Work Safety Video Analytic	CLP - Black Point Power Plant	2021
Hong Kong	SSSS - Personnel management for containers during COVID	CLP - Castle Peak Power Plant	2021
Hong Kong	SSSS - 5G enabled Smart Construction Site Monitoring	Nga Ying Decoration Ltd	2023
Hong Kong	SSSS - 5G enabled Smart Construction Site Monitoring	Por Mee Factory Building	2023
Hong Kong	SSSS - UWB-enabled Collision Avoidance System for Vehicle	SUEZ - IWTS	2021
Hong Kong	Smart Metering - LoRaWan (POC)	SUEZ - IWTS	2021
Hong Kong	Smart Toilet - LoRaWan	Hong Kong International Airport	2022
Hong Kong	Smart Toilet - LoRaWan (POC)	Poly University	2021
Hong Kong	Smart Facility Management - LoRaWan @ M+	ASD	2021
Hong Kong	Smart Facility Management - LoRaWan	Kadoorie Estates Limited	2020-2023
Hong Kong	IOT Hub	Kai Tak Sports Park	2023
Macau	Smart Elderly Center - Zigbee	Vila Medalena Macau	2019
Hong Kong	Smart Metering	Poly U	2020
Hong Kong	Smart Toilet	Poly U	2022
Hong Kong	Smart Facility Management - Water leakage Detection	Queensway Government Office	2022
Hong Kong	Smart Visitor Management - People Counting	Hong Kong U	2020
Hong Kong	Smart Facility Management Notification Platform	Queensway Government Office	2023
Hong Kong	Smart Chiller Plant Monitoring	EMSD	2022
Hong Kong	Smart Chiller Plant Monitoring	EMSD	2023
Hong Kong	Smart Chiller Plant Monitoring	Poly U	2023

Video Analytic of SSSS - CLP

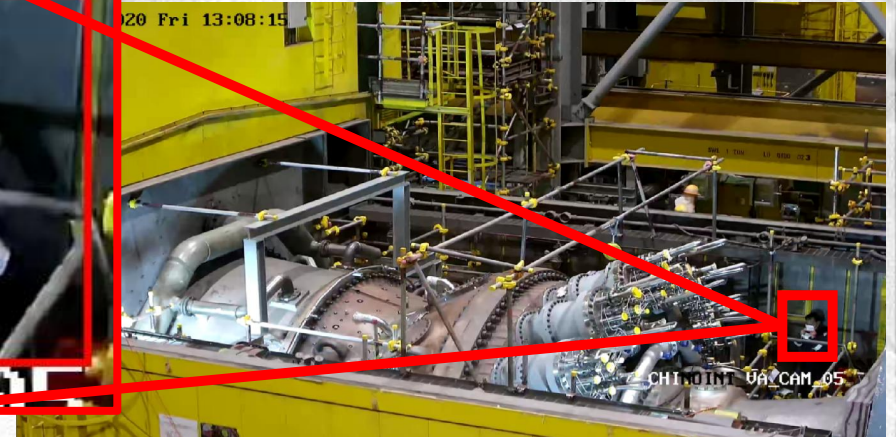
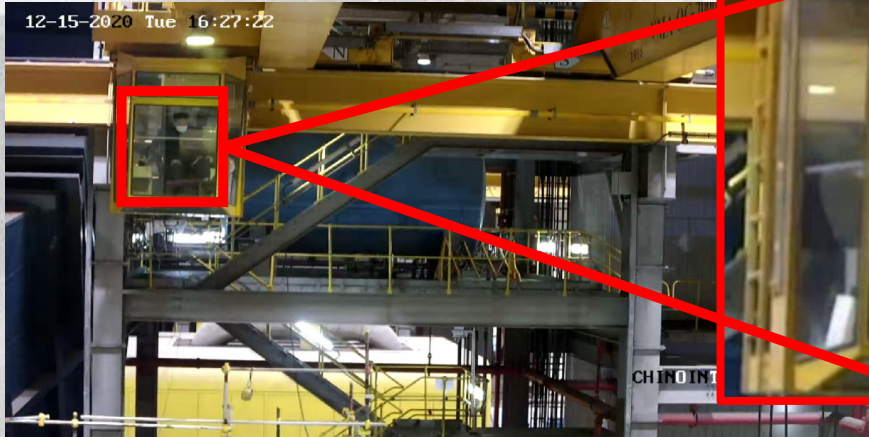
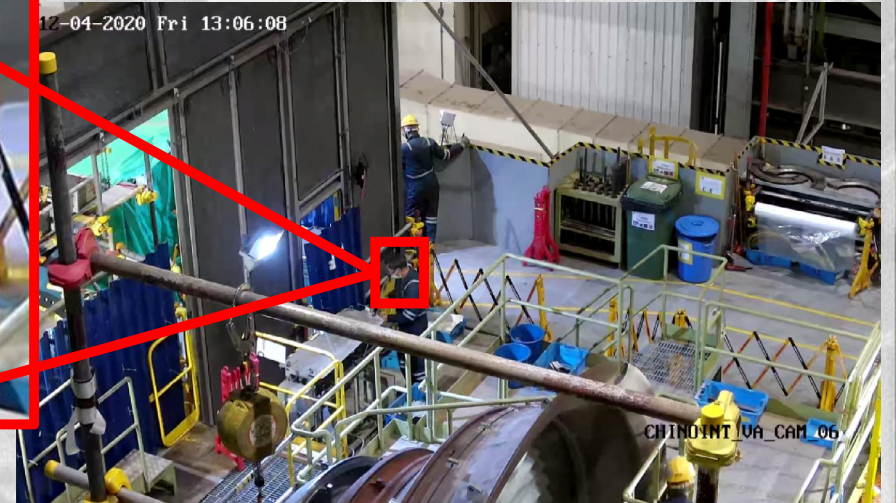
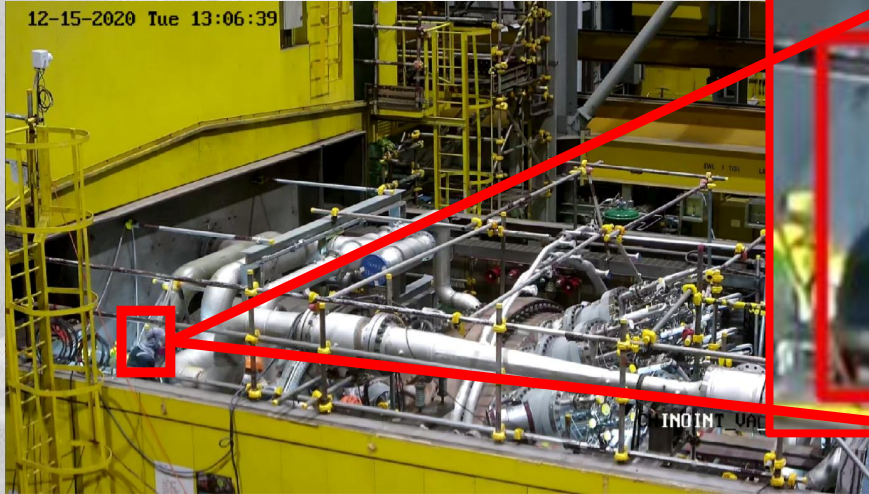


SSSS - Confined Space Management @ Power Plant & University



Safety Helmet Recognition

Able to catch workers without safety helmet onsite, safety issues have no way to hide



Safety Belt Recognition

Able to catch workers without safety belt onsite, no alert for those with safety belt



Simple and Neat installation

— — —



SSSS - Collision Avoiding System @ Transfer Station

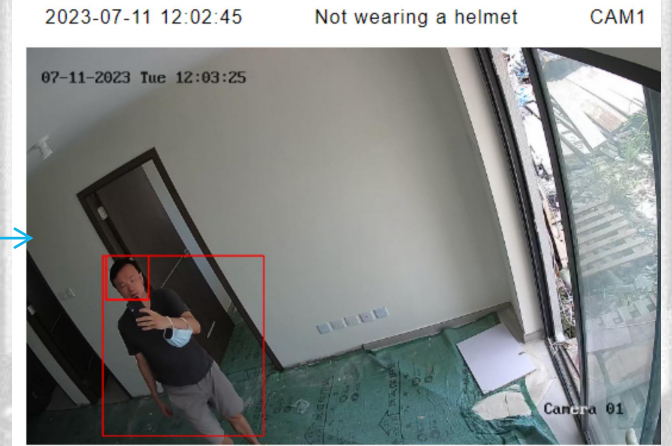
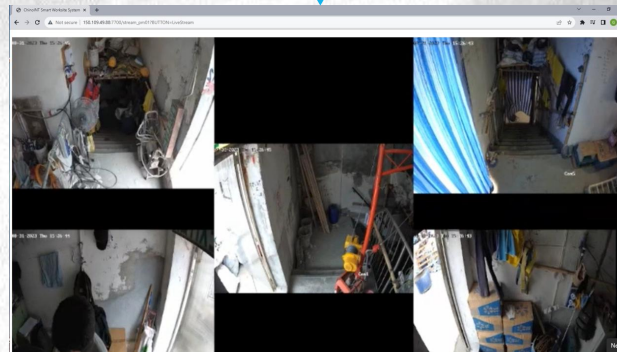
ChinoINT also masters on latest technology such as UWB to design real time monitoring system to raise safety to the next level



Rich functionality

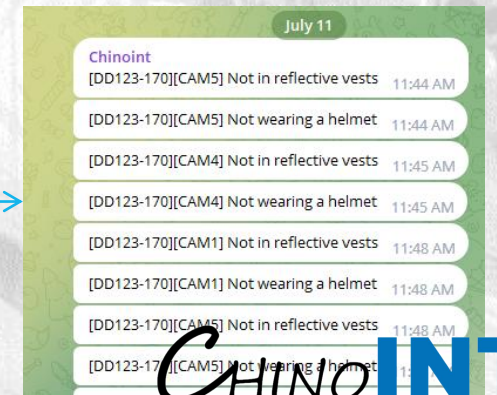
- Human face recognition
- human body recognition
- license plate recognition
- smoke and flame recognition
- helmet recognition
- phone calling recognition
- cigarette smoking
- gathering of people recognition
- work clothes recognition
- leaving work and sleeping recognition
- zone intrusion warning
- human fall recognition
- running recognition
- clothes color
- Fire escape blockage identification
- etc

SSSS - 5G AI Safety Monitoring



Platform alert: AI detects "not wearing a helmet" under CAM1

- Real time streaming
- APP Notification
- Evidence with photo



CHINoint
SENSE CONNECT

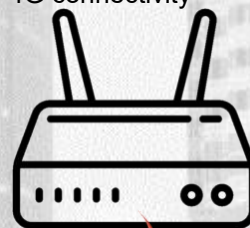
All-in-One IAQ sensor:
°C, Humidity, H2S, NH3, TVOC, PM2.5,
with HCHO, CO2, CO, O2, stc as options

Connection :
RS485/LoRaWan

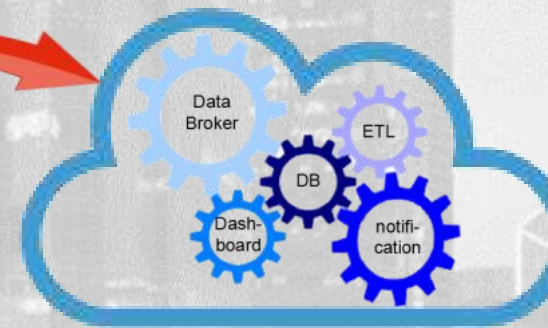


HKIA Smart Toilet over LoRaWan

Edge computing
LoRaWan Gateway
with 4G connectivity



4G



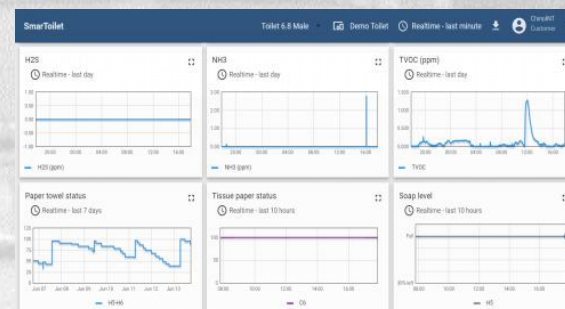
Benefits

- Latest long range low power wireless technology
- Tailor-made, fully integrated design to fit into existing equipment style
- Real time status for consumables, air quality
- On-demand cleaning to save > 60% of resource
- Clear dashboard for management team
- Real time notification for operation team
- Performance data for maintenance team
- Clean and neat on-site dashboard for airport users

Tailor-made, fully integrated, implicit design
LoRaWan sensors
running on battery with long battery life
for consumable status detection



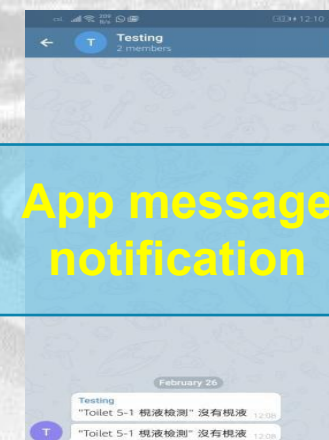
On-site dashboard



Real time alert for rubbish bin,
consumable, air quality, etc



App message notification



PolyU Smart Toilet



System Component:

- IOT Edge Computing Gateway
- Odor gas sensors
- People Counting solution
- RFID auto attendance system



Smart Elderly Center - Macau

Indoor Location

The Indoor Location system locates patients, nurses within the coverage of the Smart Hospital system.

Anti-Wanderer

The Anti-Wanderer system alerts when specific people gets out of the Smart Hospital area. This prevents from missing patients and elderly.

Nurse Call

Whenever in need, the patients, nurses and doctor are able to get immediate help by using the Nurse Call system, together with the Indoor Location system. No false alarm!!

Fall Prevention

Some patients and elderly are not quite mobile. The Fall Prevention system protects them by alerting related personnel to offer assistance when they need to move around.

Remote Home Care

Home pension is getting traction. The Remote Home Care system allows family and nurses to learn the status and needs from the home pensions.



Smart Chiller Plant and Switch Room Monitoring - EMSD & Poly U



Project Background

To maintain the environment safety and real time monitoring

Project Description

LoRaWan air quality sensors including Chlorine sensors are deployed. LoRaWan sensors such as people counter, water leakage, piep monitoring are being installed.

ChinoINT successfully deployed a LoRaWan infrastructure and achieved the above goals.



Smart Facility Management - Kadoorie Management



Project Background

A Hong Kong Real Estates Company would like to deploy a IoT system to collect the building alarms from remote sites (services apartment)

Project Description

LoRa sensors/LoRa Nodes for dry contact are deployed at their main building and remote site buildings to collect the alarm for water leakage, temperature & RH, water level, CT. pipe pressure, etc and transfer the alarms to main office via Internet.

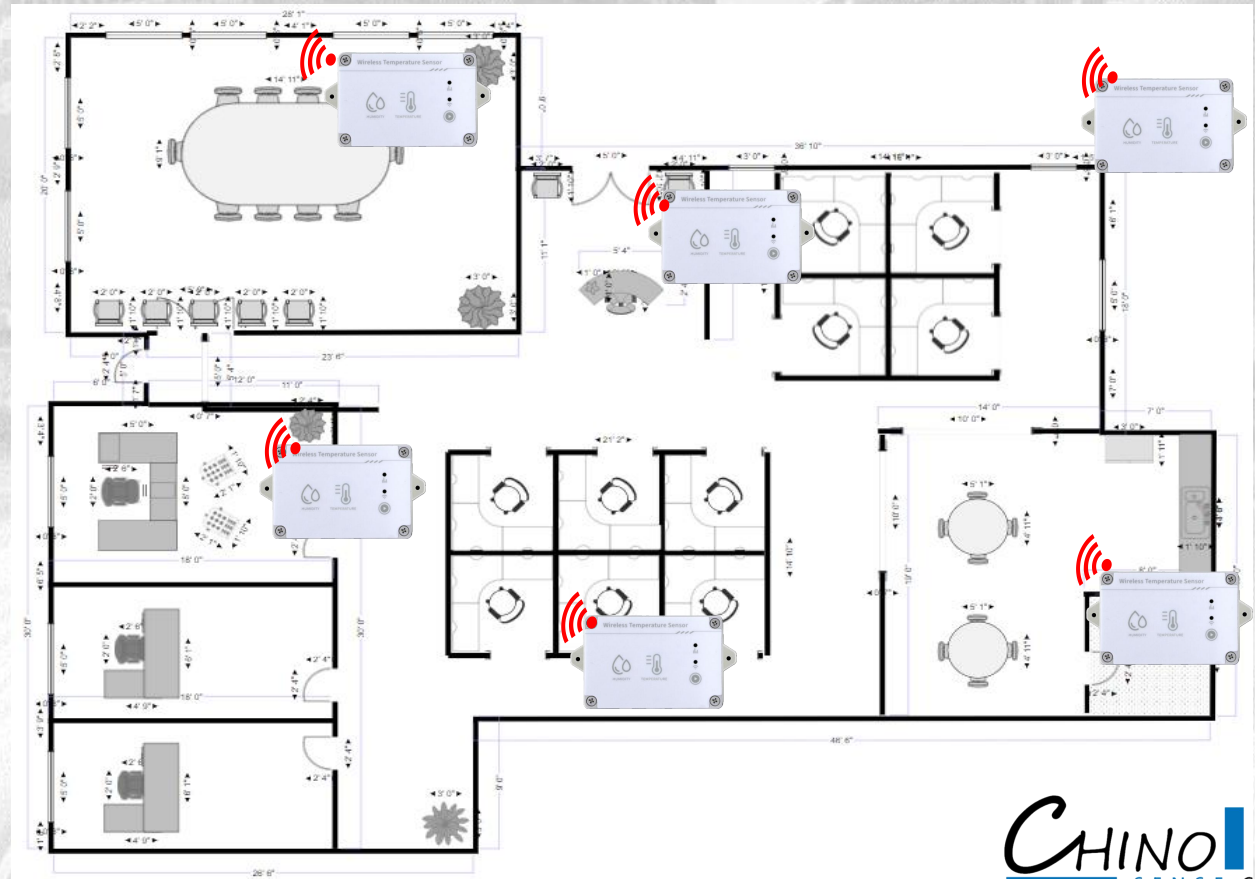
ChinoINT successfully deployed a LoRaWan infrastructure and achieved the above goals.

Automated Air/Con Automation @ M+

ChinoINT masters on wireless technology.

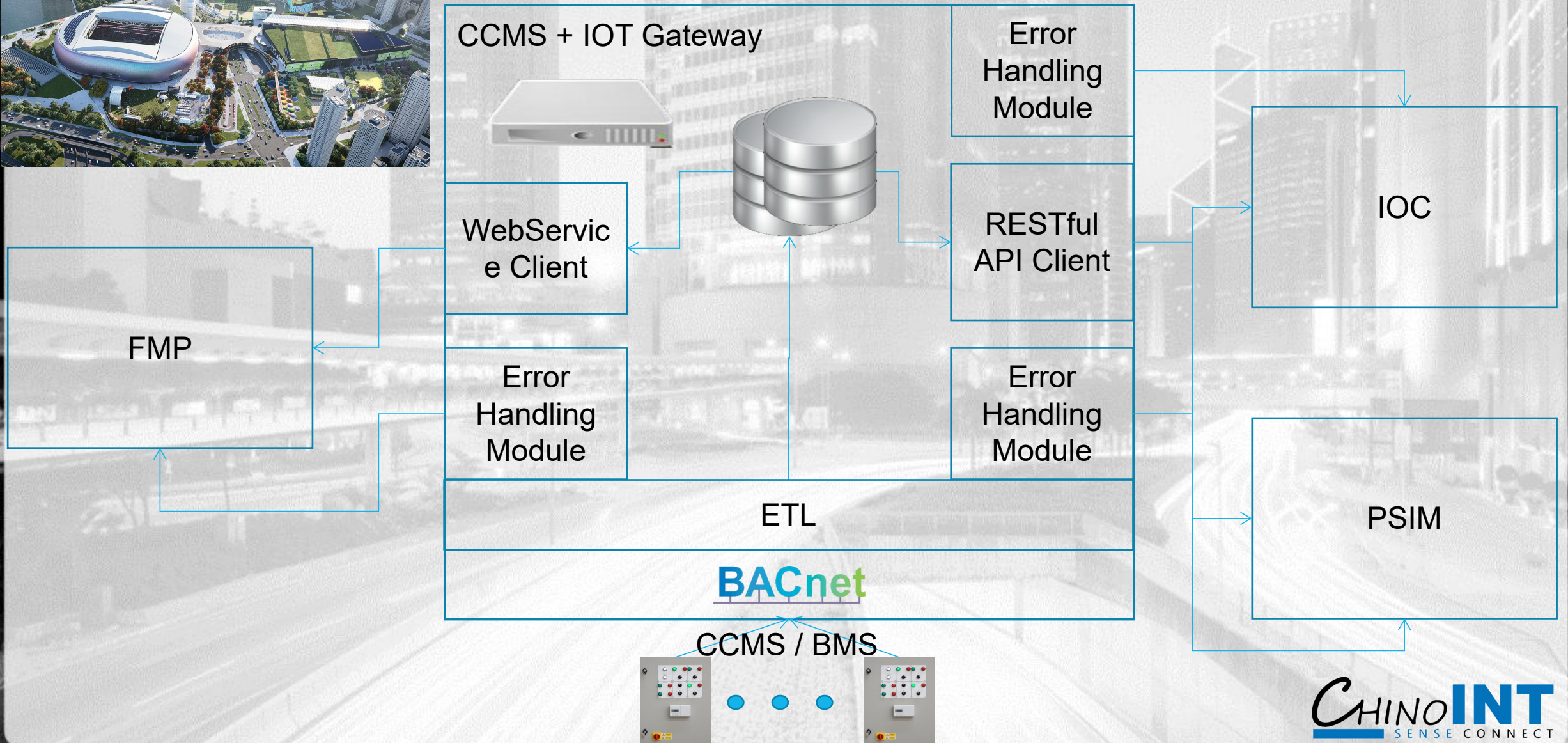
Temperature and humidity feeds to the IoT gateway.

Feedback to BMS and control HVAC locally





IOT Hub @ Kai Tak Sports Park



Smart Metering @ Transfer Station

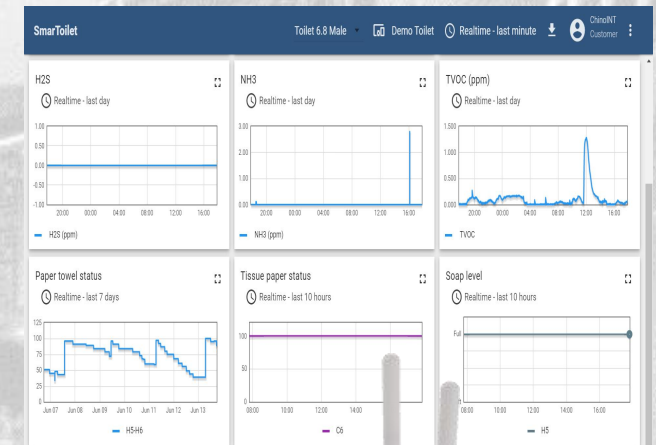
ChinoINT has show-cased our strengths in IOT technologies

We have enabled smart metering solution in Transfer Station in Hong Kong

Not only providing IOT metering with fully integrated dashboard with dashboard for real time and historical data, and also enabling real time analytic and alerts with extra values



LoRaWan Meter
Battery powered
(4.5 years battery life)





Thank You

sales@chinoint.com